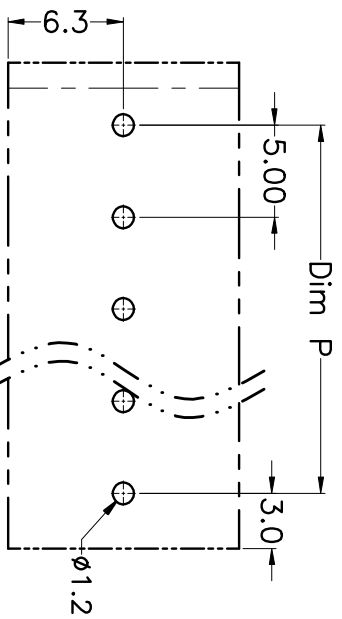
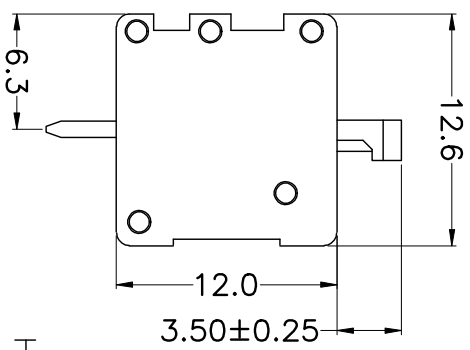
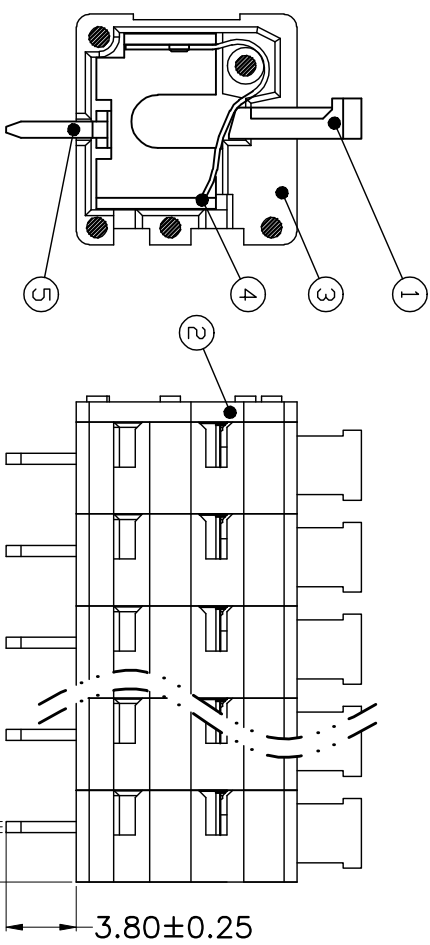
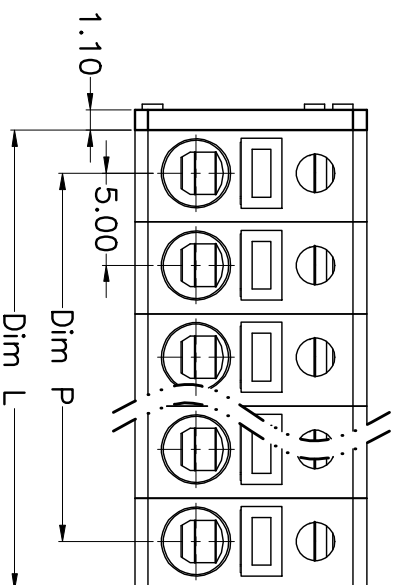


REV.	DESCRIPTION	DATE	DRAWN	APPROVED
A1	DWG.REL	2015.3.12	FANG	YANG



N=Number of Poles
Dim P=(N-1)X5.00
Dim L=Nx5.00

Poles	Dim P	Dim L
2-6P	±0.10	±0.15
7-12P	±0.20	±0.20
13-18P	±0.25	±0.30
19-24P	±0.30	±0.40

- Material
 - @Button : PA66, UL94V-0
 - @Cover : PA66, UL94V-0
 - @Housing : PA66, UL94V-0
 - @Reed : Stainless steel
 - @Pin header : Brass, Tin plated

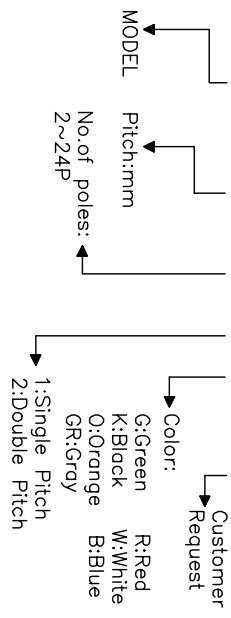
- Electrical

UL	IEC
Rated voltage : 300V	250V
Rated current : 8A	10A
Insulation resistance: 500MΩ/DC500V	
Withstanding Voltage : AC2000V/1min	
Wire range: 24-16AWG	1.5mm ²

- Mechanical
 - Operating temperature: -40°C ~ +105°C
 - Soldering temperature: 250°C ±5/5sec
 - Strip length: 8-9mm

HOW TO ORDER

KF246V-5.0-XXP-1 X-XXXXX



GENERAL TOLERANCE ANGLE TOLERANCE

X.	±0.5	X.	±5'
.X	±0.3	.X.	±3'
.XX	±0.1	.XX.	±1'

PROJECTION	TITLE
UNITS	KF246V-5.0-XXP
SHEET SIZE	A4
SERIES	KF246V

DRAWING TYPE	CUSTOMER
SCALE	1:1
DRAWING NO.	SHEET 1 OF 1

科奕科技有限公司