

| REV. | DESCRIPTION | DATE      | DRAWN | APPROVED |
|------|-------------|-----------|-------|----------|
| A1   | DWG.REL     | 2015.3.12 | FANG  | YANG     |

- Material
  - ⊙Button : PA66, UL94V-0
  - ⊙Screws : M3.0 steel, Zinc plated
  - ⊙Clamp 1 : Brass, Ni plated
  - ⊙Housing : PA66, UL94V-0
  - ⊙Clamp 2 : Brass, Ni plated
  - ⊙Reed : Stainless steel

- Electrical
 

|                      |      |
|----------------------|------|
| UL                   | IEC  |
| Rated voltage : 300V | 450V |
| Rated current : 10A  | 7.5A |

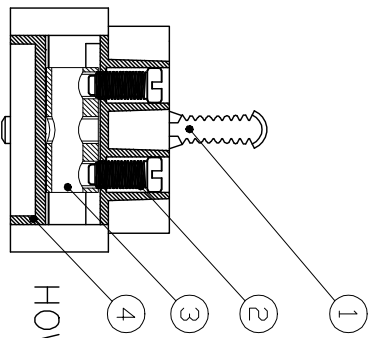
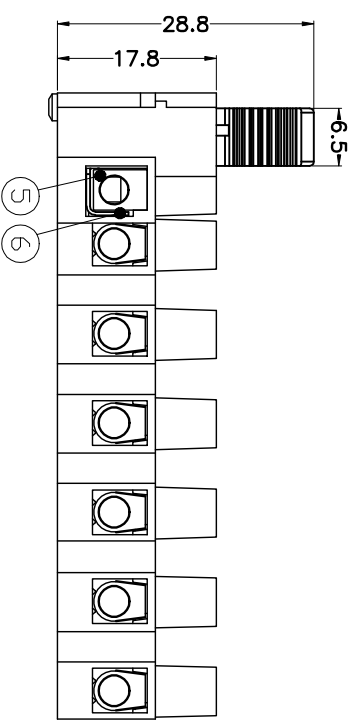
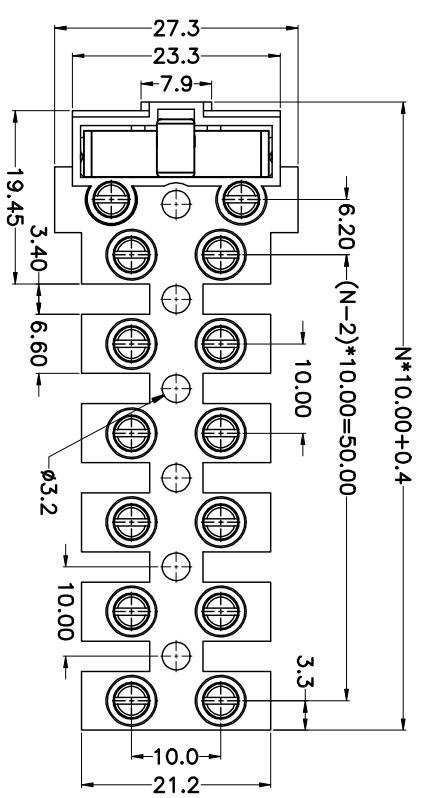
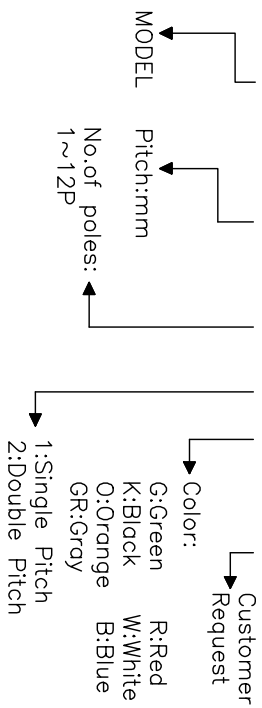
Insulation resistance: 500MΩ/DC500V  
 Withstanding Voltage : AC2500V/1min  
 Wire range: 22-14AWG 0.5~2.5mm<sup>2</sup>

- Mechanical
 

Operating temperature: -40℃~+110℃  
 Soldering temperature: 250℃±5/5sec  
 Torque: 0.5N.m (4.43lb.in)  
 Strip length: 6-7mm

HOW TO ORDER

KF100-1-10.0-XXP-1 X-XXXXX



| Poles | 1P    | 2P    | 3P    | 4P    | 5P    | 6P    | 7P    | 8P    |
|-------|-------|-------|-------|-------|-------|-------|-------|-------|
| Dim P | 0     | 10.00 | 20.00 | 30.00 | 40.00 | 50.00 | 60.00 | 70.00 |
| Dim L | 19.45 | 29.45 | 39.45 | 59.45 | 69.45 | 79.45 | 89.45 | 99.45 |
| Tol.  | ±0.2  |       |       |       |       |       |       |       |

GENERAL TOLERANCE ANGLE TOLERANCE

|     |      |      |     |
|-----|------|------|-----|
| X.  | ±0.5 | X.   | ±5' |
| .X  | ±0.3 | .X.  | ±3' |
| .XX | ±0.1 | .XX. | ±1' |

|              |          |       |        |
|--------------|----------|-------|--------|
| DRAWING TYPE | CUSTOMER | SHEET | 1 OF 1 |
| SCALE        | 1:1      | SHEET | 1 OF 1 |
| DRAWING NO.  |          |       |        |

PROJECTION UNITS TITLE

|            |    |        |                  |
|------------|----|--------|------------------|
| UNITS      | mm | TITLE  | KF100-1-10.0-XXP |
| SHEET SIZE | A4 | SERIES | KF100-1          |

科奕科技有限公司