

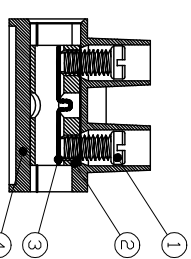
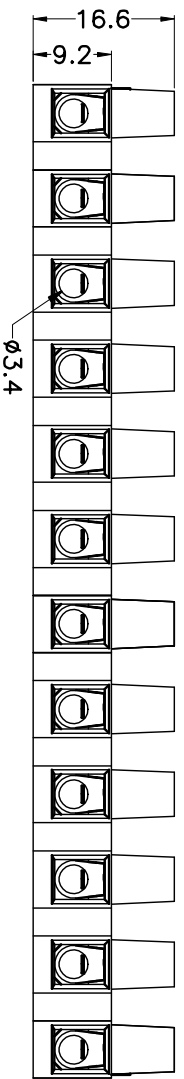
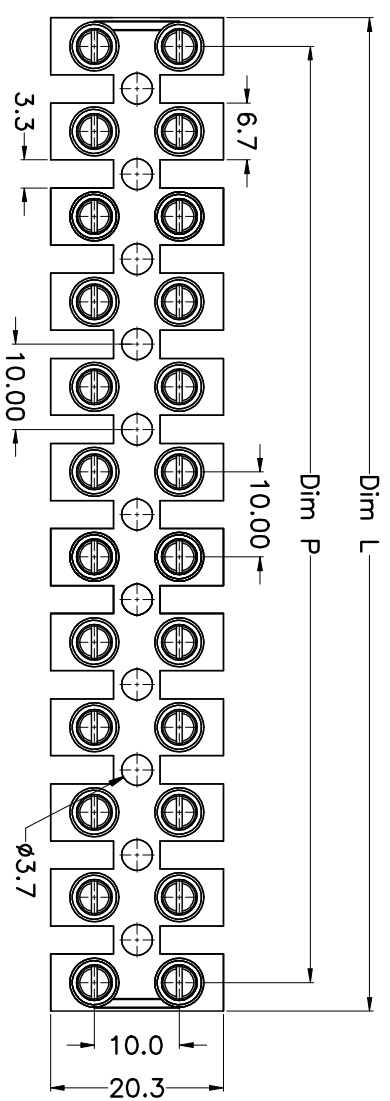
REV.	DESCRIPTION	DATE	DRAWN	APPROVED
A1	DWG.REL	2015.3.12	FANG	YANG

- Material
  - ØScrews : M3.0 steel, Zinc plated
  - ØClamp : Brass, Ni plated
  - ØReed : Stainless steel
  - ØHousing : PA66, UL94V-2

- Electrical
 

UL	IEC
Rated voltage : 300V	400V
Rated current : 20A	41A
Wire range: 18-10AWG	1.0~4.0mm <sup>2</sup>

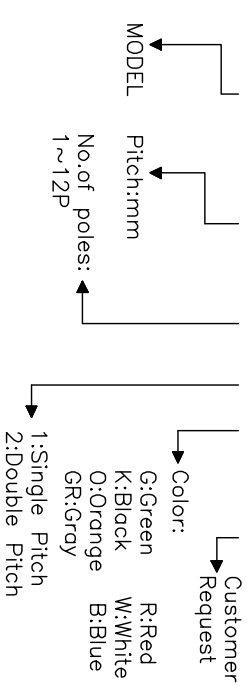
- Mechanical
  - Operating temperature: -40°C~+110°C
  - Soldering temperature: 250°C±5/5sec
  - Torque: 0.5N.m (4.43lb.in)



Poles	1P	2P	3P	4P	5P	6P	7P	8P	9P	10P	11P	12P
Dim P	0	10.00	20.00	30.00	40.00	50.00	60.00	70.00	80.00	90.00	100.00	110.00
Dim L	6.70	16.65	26.65	36.65	46.65	56.65	66.65	76.65	86.65	96.65	106.65	116.65
Tol.			±0.15								±0.20	

HOW TO ORDER

KF10HWP-10.0-XXP-1 X-XXXXXX



GENERAL TOLERANCE

ANGLE TOLERANCE

PROJECTION

X.	±0.5	X.	±5'
.X	±0.3	.X'	±3'
.XX	±0.1	.XX'	±1'

UNITS	mm	TITLE	KF10HWP-10.0-XXP
SHEET SIZE	A4	SERIES	KF10HWP

DRAWING TYPE	CUSTOMER
SCALE	1:1
DRAWING NO.	SHEET 1 OF 1

科奕科技有限公司